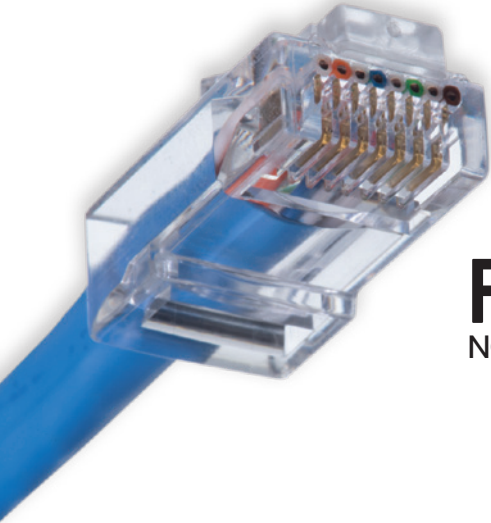


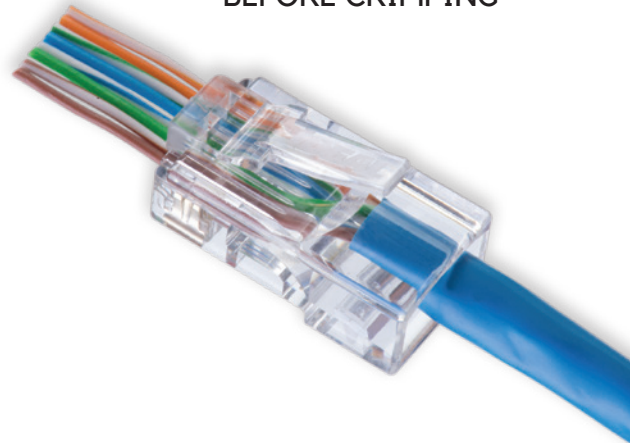
MODULAR PLUG INSTALLATION SOLUTIONS

FEED-THRU CONNECTORS

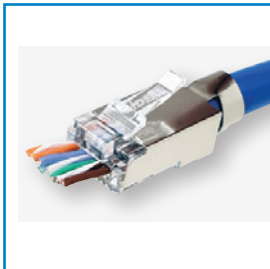
VERIFY
CONDUCTOR ORDER
BEFORE CRIMPING



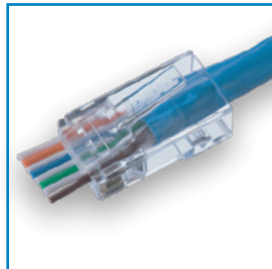
FLUSH CUT
NO EXCESS CONDUCTOR



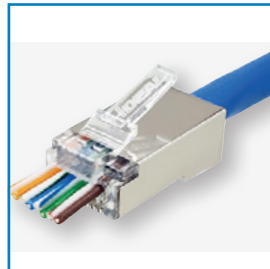
**CAT6A/6/5e Shielded
Feed-Thru**



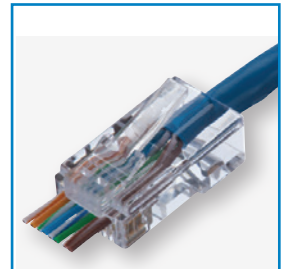
CAT6 Feed-Thru



**CAT5e Shielded
Feed-Thru**



CAT5e Feed-Thru



FT-45 Crimp Tool

Crimps all standard and
Feed-Thru RJ-45 Connectors



Jar Pack Options



NEW

Kits



NEW

CAT5E

CAT6

CAT6A

THE ELECTRICIAN'S
CHAMPION



IDEALIND.COM

SIMPLIFIED MODULAR PLUG TERMINATIONS

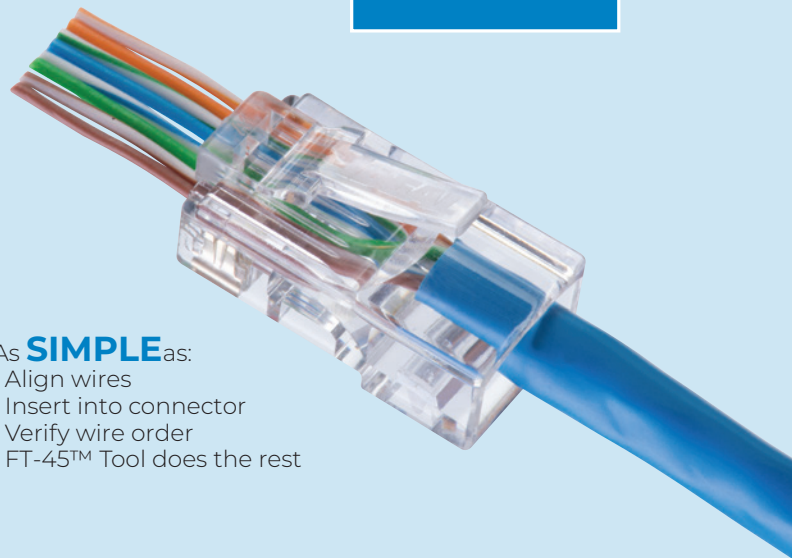


The IDEAL Feed-Thru RJ-45 Modular Plugs and FT-45™ Crimping Tool are designed to simplify and improve the consistency of cable to connector termination of CAT5e and CAT6 modular plugs to twisted pair cables. Anyone who has assembled traditional standard or multi-piece modular plugs knows it is a time consuming and often error-prone process.

This system makes it **SIMPLE**

- No more wasted materials
- No more wasted labor
- No sleds or liners

SIMPLE



As **SIMPLE** as:

- Align wires
- Insert into connector
- Verify wire order
- FT-45™ Tool does the rest

Verify conductor order before crimping

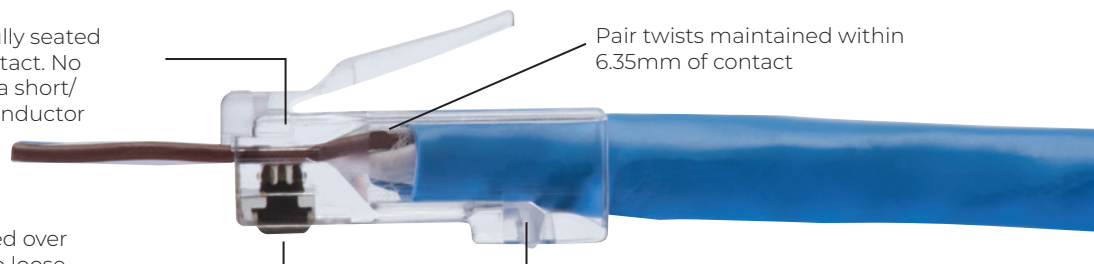


Single piece CAT6 connector. Same preparation as CAT5e connector

Feed-Thru Modular Plugs

Open-end Feed-Thru connectors offer several advantages over standard closed end connectors. Conductor order can be verified prior to crimping. Conductors that feed-thru the connector are inserted far enough to be pierced by the pin below. The cable can be pushed or pulled into the connector to ensure that the twisted pairs are as close to the pin contacts as possible and that the jacket is seated beyond the primary strain relief for a secure connection. A patent pending design enables conductors to be cut flush with the end face of the connector when used with the FT-45™ tool. CAT5e and CAT6 connectors are both single piece connectors that use the same assembly process, no special assembly or multiple pieces for CAT6.

Conductors fully seated above pin contact. No opens due to a short/misaligned conductor



Pair twists maintained within 6.35mm of contact

3 pin IDC contact, 50μ gold plated over 150μ nickel. Secured in place - no loose pins in the package.

Jacket seats past strain relief tab

FT-45™ Modular Plug Crimp Tool

Don't let its size fool you. The FT-45™ is a simple, compact and highly effective crimp tool for installers and techs that terminate RJ-45 connectors regularly. Instead of another traditional oversized, heavy, crimp tool style loaded with features that are rarely used or that just don't work well, we took this tool in a new direction. It's built for today and tomorrow, not the past. A single crimp cavity for RJ-45 / 8-position connectors that can be used with Feed-Thru, standard, or shielded connectors for CAT5e or CAT6. A custom, heavy duty cutting blade that will last for over 2,000 cuts. A mechanical design that requires only 1/3 to 1/2 the hand force of traditional tools to crimp the connector - no ratchet mechanism is needed and one handed crimping is possible. The tool is compact, 140mm in length and weighs just over 225g, about half the size and weight of bulkier traditional tools. Easily fits in your pocket and lightens the tool bag load. It packs a punch, and does exactly what it's supposed to.



Flush Cut

During crimping, the FT-45™ cleanly shears the excess conductors and leaves a smooth, flat finish to the end face of the connector. No protrusions or small lengths of conductor remain beyond the plastic face of the connector. This minimizes accidental shorting of conductors or inadvertent contact in plug jacks.



FT-45™ is Compatible with CAT5e/CAT6/CAT6A

Feed-Thru Connectors



Standard RJ-45 Connectors



Shielded Connectors



Large Diameter CAT6A/6/5e



CAT5e



CAT6



MODULAR PLUG INSTALLATION SOLUTIONS

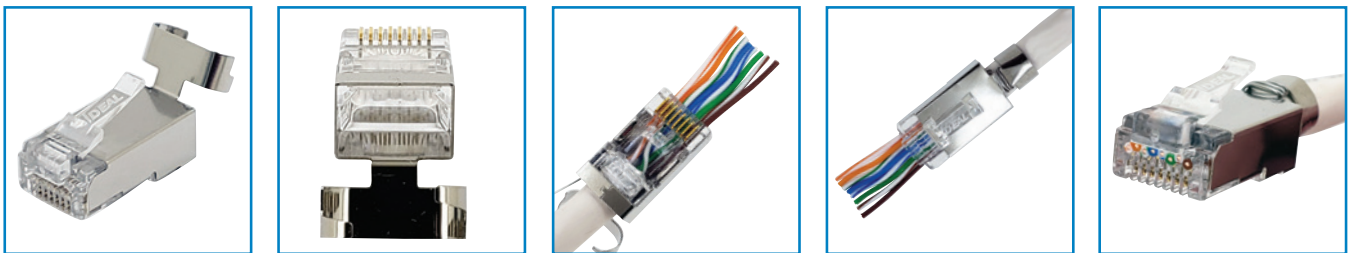
CAT6A/6/5e Shielded Feed-Thru for Large Diameter Conductors

Our newest member of the Feed-Thru family of products is specifically designed to handle the challenges faced with field termination of shielded cables. The CAT6A/6/5e connector is made to work with cables - shielded or unshielded, that have larger insulated conductor diameters that typically will not fit into a standard in-line modular plug design. Utilizing a unique conductor and pin stagger pattern, the single piece design helps to funnel the conductors through the connector and out of the Feed-Thru end. No load bars or multi piece assemblies are required. The connector is then terminated with the FT-45 Crimp Tool. No adjustments or blade changes are required to the FT-45 to use this connector

The connector is designed for 1.02mm through 1.22mm insulated conductors, typically found in CAT6A, CAT6, and CAT5e shielded cables. Shield continuity can be made internally by folding the cable foil over the jacket and making contact with the inside of the connector walls or externally by wrapping the cable drain wire around the base of the jacket strain relief clip .

The jacket strain relief clip is pre-positioned in the up position so cable insertion is simplified. The pre-formed clip can be closed and crimped with a standard needle nose or plier-nose device like the IDEAL® 33-719 or other IDEAL® T®-Strippers.

Pin contacts are a 3 prong design and have 50u" gold plated contact areas. The FT-45 crimp tool , (IDEAL® 30-495) is required to properly terminate this connector.



Feed-Thru Hip Kits

The 33-507 Feed-Thru RJ-45 Installation Hip Kit includes the necessary tools to cut, strip and terminate RJ-45, 8P8C modular plugs to twisted pair cabling. The tools in the kit are designed to work together with CAT5e, CAT6 and CAT6A cabling. The FT-45™ crimp tool is a compact, lightweight crimper that provides a flush cut on IDEAL® Feed-Thru modular plugs. It is also compatible with standard (non-Feed-Thru) and shielded connectors. The PrepPRO® Coax/UTP Cable Stripper utilizes a fixed depth blade to score the jacket of twisted pair cable without nicking the inner conductors. Scissors are included for cutting off old connector ends and trimming the cable or conductors to size. The pouch includes a clip to attach the kit to a tool bag or belt and keeps the termination tools together in one compact space. A spare slot is included to add the Punch Down Tool, or other similar shaped tools to the kit. The small round slot can be used to hold additional Punch Down tool blades.

The 33-508 Twisted Pair Termination Hip Kit includes all the above plus the Punchmaster™ II Punch Down Tool with 110 and 66 blades for the added benefit of terminating modular jacks and panels.

33-507 Feed-Thru RJ-45 Installation Hip Kit



33-508 Twisted Pair Termination Hip Kit

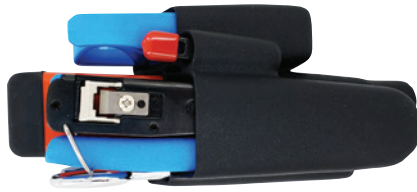


Part No.	Tool Hip Kits
33-507	Feed-Thru RJ-45 Installation Hip Kit - Includes: 30-495 FT-45 Crimper, 45-605 PrepPro® Coax/UTP Cable Stripper, 35-088 Scissors and Pouch
33-508	Twisted Pair Termination Hip Kit - Includes: 30-495 FT-45 Crimper, 35-485 Punch Down Tool, 45-605 PrepPro® Coax/UTP Cable Stripper, 35-088 Scissors and Pouch

Modular Plug Termination and Prep Tools



FT-45™ Feed-Thru Modular Plug Crimp Tool **30-495**
 FT-45™ Replacement Blade **30-4951**



Twisted Pair Termination Hip Kit **33-508**



Feed-Thru RJ-45 Installation Hip Kit **33-507**



PrepPRO® UTP/Coax Cable Stripper **45-605**



Adjustable Ringer Jacket Stripper **45-165**



Electrician's Scissors **35-088**

Modular Plugs

	Name	CAT	Type	Notes	Quantity	Part No.
	CAT6A/6/5e Shielded Feed-Thru	Multi	RJ-45 8P8C	For shielded or unshielded CAT6A, CAT6 or CAT5e with insulated conductor diameter of 1.02mm to 1.22mm, max. jacket diameter of 8.13mm	Card of 25	85-368
					Jar of 50	85-369
	CAT6 Feed-Thru	6	RJ-45 8P8C	For unshielded CAT6 with 0.26mm ² or 0.20mm ² conductors with a max. insulated conductor diameter of 1.04mm, 1.04mm, max. jacket diameter of 7.37mm	Card of 50	85-376
					Bag of 100	85-377
					Jar of 100	85-377J
	CAT5e Feed-Thru	5e	RJ-45 8P8C	For unshielded CAT5e with 0.26mm ² or 0.20mm ² conductors with a max. insulated conductor diameter of 1.04mm, max. jacket diameter of 6.86mm	Card of 50	85-371
					Bag of 100	85-372
					Jar of 100	85-372J
	CAT5e Shielded Feed-Thru	5e	RJ-45 8P8C	For shielded CAT5e with 0.20mm ² conductors with a max. insulated conductor diameter of 1.04mm, max. jacket diameter of 6.86mm	Card of 25	85-365

NEW



Jar Options for Modular Plugs

Resealable jars of 100 pieces. Includes FREE jacket Stripper.

CAT6 Feed-Thru **85-377J**
 CAT5e Feed-Thru **85-372J**



In support of our policy of continuous product improvement we reserve the right to change materials and specifications without notice. Drawings, where used, are not to scale. All dimensions are in millimetres and sizes given are approximate. Where possible, technical MSDS data sheets are made available on the website. All products should be installed and used in accordance with manufacturer's instructions provided. Warning: products may be the subject of registered designs and patents. Refer to website for terms and conditions on warranty.